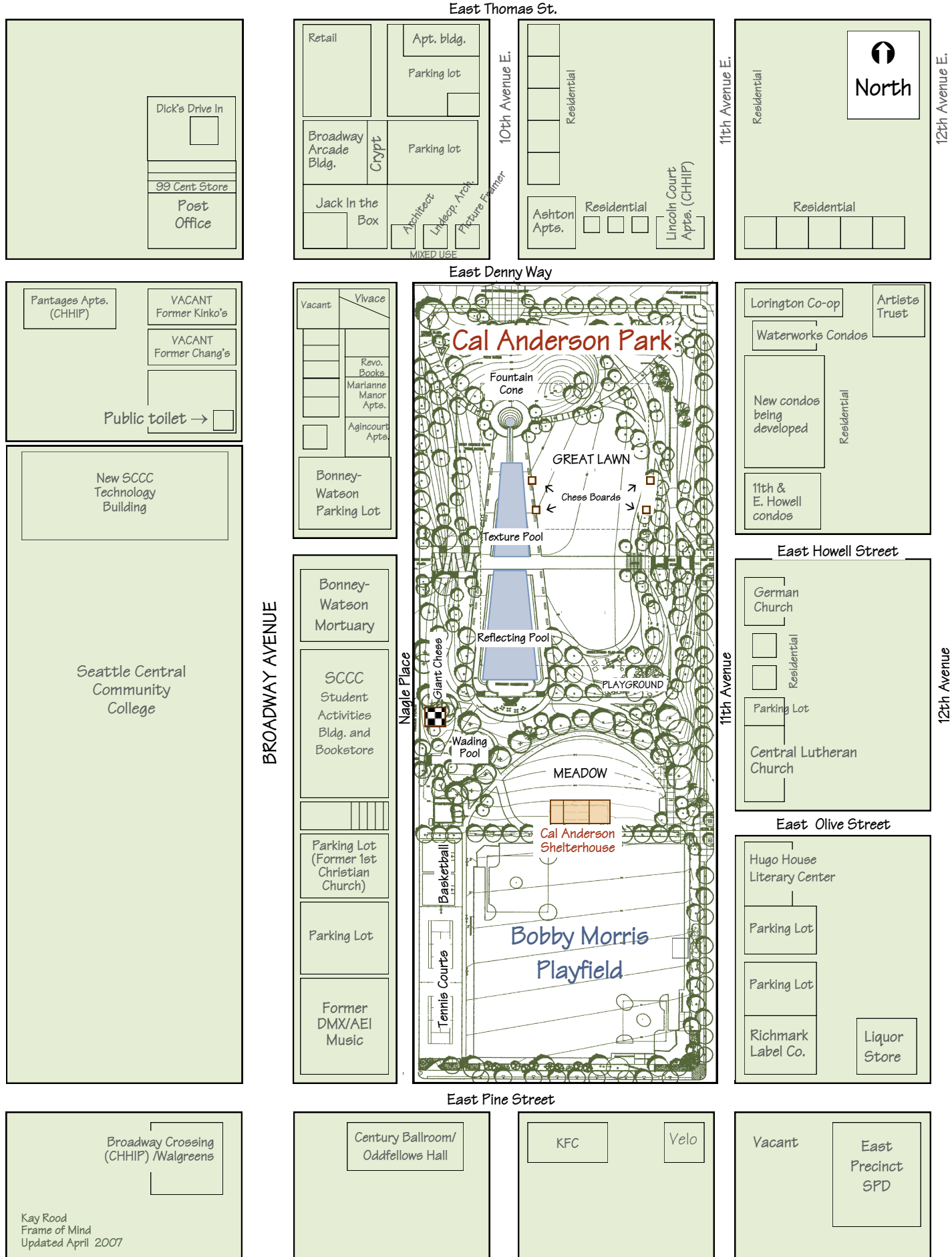
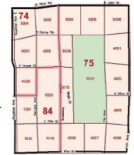


CAL ANDERSON PARK IN NEIGHBORHOOD CONTEXT



THE CAL ANDERSON PARK INDEX

Number of years since the original Olmsted Brothers park plan for this site was submitted to the city	103
Number of acres in the park	11.13
Year the park became a Seattle Historic Landmark site	2002
Number of acres of existing open space on Capitol Hill which fulfill Comp Plan criteria	.83
Community priority ranking to create Cal Anderson Park, at the final Capitol Hill Neighborhood Plan validation meeting in 1998	#1
Appraised land value according to the King County Assessor's Office [2007]	\$ 43,625,400
Percent of Seattle households on Capitol Hill ¹	9.8
Number of Capitol Hill residents ¹	46,170
Number of residents in the CH planning area ¹	19,075
Number of persons per square mile on Capitol Hill ¹	44,000
Median age of Capitol Hill resident ¹	32.1
Percent of housing units of Capitol Hill which are renter-occupied ¹	75
Residences within 1-1/2 blocks of the park	1,623 ⁴
Community priority ranking in 1996 to replace the former restroom building	#1
Amount of largest City matching fund grant ever awarded, to Groundswell Off Broadway, for the Cal Anderson Park Shelterhouse/restroom project completed in 2003	\$ 250,000
Amount of money raised, matched and/or leveraged for park improvements by Groundswell Off Broadway since 1994	\$ 1.1 million
Amount of the voter-approved ProParks Levy 2000 funds allocated to complete the Cal Anderson Park Site Master Plan	\$ 5 million
City's cost to bury the Lincoln Reservoir ²	\$ 23,300,000
Number of people living on the streets of Seattle ³	7,980
Number of people under 18 years old living on the streets of Seattle ³	2,474
Number of City work orders to remove graffiti at the park last year ⁴	\$?
Number of stores that sold high-octane alcohol in the Capitol Hill planning area in 2005 ⁶	28
Number of stores selling high-octane alcohol since AIA mandatory implementation in September 2006	0 ?
Number of tobacco stores selling drug paraphernalia in the Capitol Hill planning area ⁵	9
Minimum number of Trespass/Trespass Park Exclusions/Park Exclusions issued in and around the park 1/1/05 – 7/31/05 ⁵	72/16/38
Community ranking in 2005 survey of the importance of parks as essential to a healthy neighborhood ⁷	#1
Number of new officers citywide if Mayor Nickels' new "Neighborhood Policing" proposal is enacted ⁸	105
Percentage reduction in East Precinct beat areas as a result of the same proposal ⁸	28%
Number of command turnovers* at the East Precinct between 1990 and 2007 ⁵	12
Number of blocks the East Precinct is from the park	1



1. Puget Sound Regional Council, Milestones Report, 2002; 2. Seattle Public Utilities; 3. Seattle/King County Coalition for the Homeless, 2002; 4. Seattle Department of Parks & Recreation; 5. Seattle Police Department, 2007; 6. Capitol Hill Neighborhood Service Center; 7. Sustainable Seattle Healthy Neighborhoods Survey, August 2005; 8. Capitol Hill Times 4/11/07

* Pirak, Wingstrand, Diaz, Pugel, Metz, Malliet, Bailey, Evenson, Hill, Meehan, Black, McDonagh